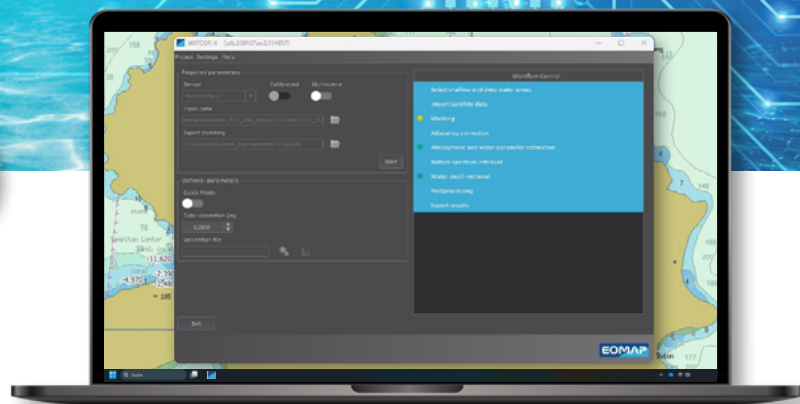







# WATCOR-X

**Establish state-of-the-art Satellite-Derived Bathymetry capabilities in your team.**

**With the stand-alone software WATCOR-X, hydrographic offices and navies can create high-resolution bathymetry grids on-demand and in secured environments.**



## 3 STEPS TO HIGH-RES BATHYMETRY

-  Define your AOI – anywhere in the world
-  Ingest relevant satellite data - 1m or 30m resolution
-  Customise your SDB processing - in-depth configuration options available



**Contact [shallowwater@eomap.de](mailto:shallowwater@eomap.de)**  
and create shallow water bathymetry  
from the comfort of your desk!

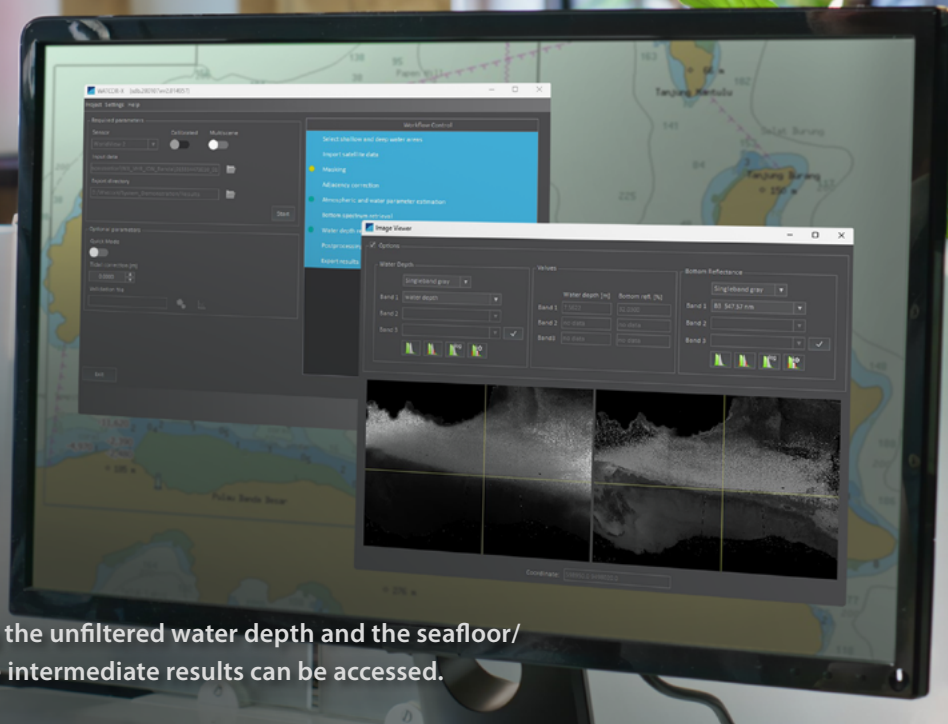
## WHY USE WATCOR-X?

- + Shallow water bathymetry without on-site data
- + Intuitive user interface and minimal training required
- + Customised on-demand
- + Desktop solution which can be run in secured environments
- + Used by hydrographic offices and navies worldwide since 2019

**Answer questions of modern hydrography and make informed decisions in coastal areas with in-house SDB capacities.**

### WATCOR-X User Interface:

Image viewer window showing the unfiltered water depth and the seafloor/ bottom reflectance. Each of the intermediate results can be accessed.



## PRODUCT FEATURES

- + For shallow waters from shoreline to 1 x Secchi Disc Depth
- + Bathymetry products following ISO and OGC standards
- + On any Windows 10/11 desktop device
- + Free access to suitable image finder tool (SWIFT) included
- + Full workflow control and access to intermediate results (e.g. atmospheric and reflectance products)
- + Multi-scene approach for robust results
- + Multi-core for high performance processing
- + Optional: integration of survey data

**EOMAP's technology is fully physics-based. In contrast to the standard, empirical approaches, site-specific calibration data is not required.**

## RECOMMENDED SYSTEM REQUIREMENTS

- ✓ RAM 32 GB
- ✓ CPU 8 core 3.40GHz
- ✓ SSD I 128 GB (FOR OS)
- ✓ SSD II 1 TB free space

## CONTACT



**Christian Bödinger**  
WATCOR-X Lead

[shallowwater@eomap.de](mailto:shallowwater@eomap.de)