

Reservoir storage changes

Track seasonal changes of the volume stored in your reservoir with satellite data

Receive information about the amount of water stored in your reservoir for multiple dates to assess the storage status.

BENEFITS

Use satellite technologies to assess storage changes in your reservoir.

- + Calculate storage changes from multiple dates
- + Understand seasonal behaviour
- + Compare different years to assess the current situation
- + None-intrusive technique
- + Applicable worldwide
- + On-demand data retrieval possible anytime
- + Higher accuracy than off-the-shelf data

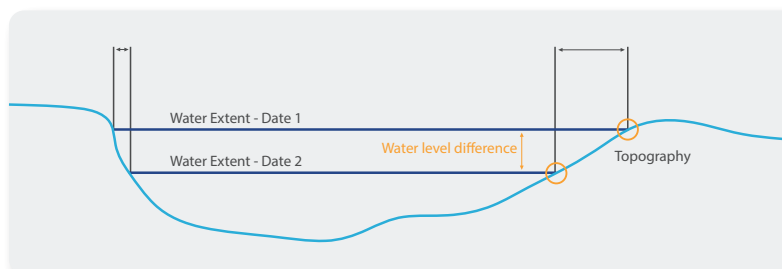
HOW IT WORKS

We search for a date in the past with the lowest water level. The terrain above is mapped and a digital elevation model is created (IMAGE).

Water extent mapping from various dates are overlaid with this elevation model to extract volume changes.

2-3 m High resolution imagery is used

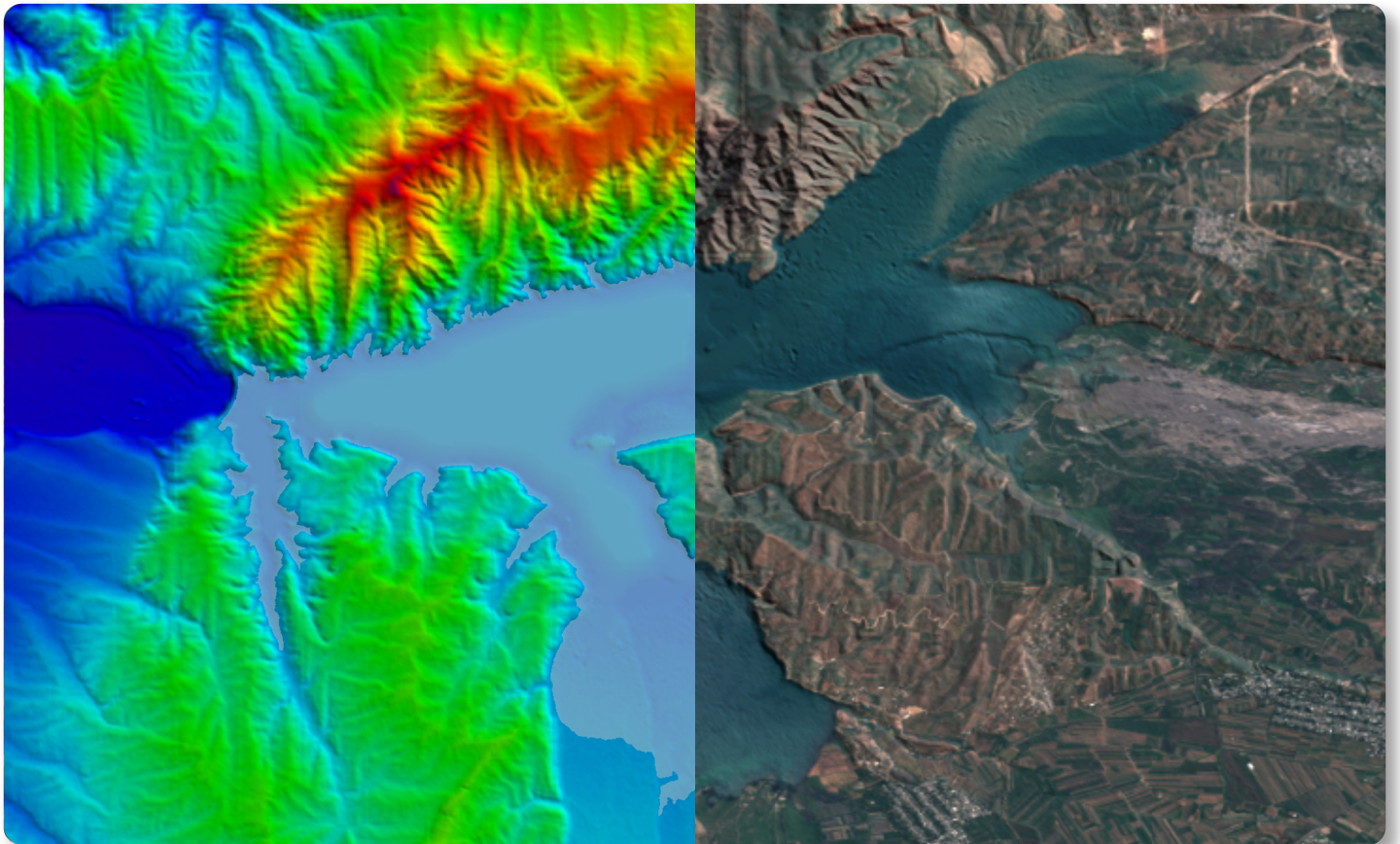
< 50 cm Vertical accuracy



Contact us
at eomap.com



Andijan Reservoir, Uzbekistan



Topography Map | Andijan Reservoir, Uzbekistan